

TATES

020 7602 6020



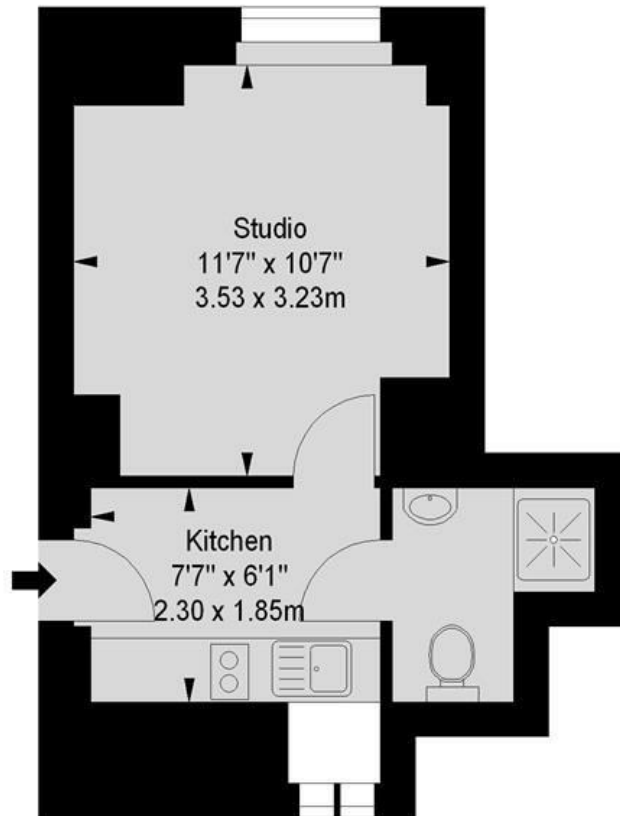
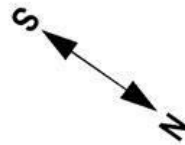
North End House, Fitzjames Avenue, London W14 0RT

£1,400 Per month

- Studio apartment
- Separate kitchen
- 24 hour porter
- Close to Picadilly and District lines of Barons Court and West Kensington tube stations
- Available now
- Furnished
- Heating & hot water is inclusive of rent
- Energy Efficiency Rating Current Band: C

North End House, W14

Approximate gross internal area
204 sq ft / 18.95 sq m



Lower Ground Floor

Illustration For Identification Purposes Only. Not To Scale
*Floorplan Drawn According To RICS Guidelines

Whilst these particulars are produced in good faith and are believed to be correct, no guarantee is given, nor any responsibility accepted, by Tates nor by any of its representatives, for their accuracy. The particulars do not constitute part of any offer or contract, and it is recommended that such things as measurements, condition, structure, services, appliances, fixtures and fittings and facilities are all independently assessed by the prospective purchaser or renter of the subject property prior to committing to any contract.

Energy Efficiency Rating		
	Current	Potential
Very energy efficient - lower running costs		
(92 plus) A		
(81-91) B		
(69-80) C	70	75
(55-68) D		
(39-54) E		
(21-38) F		
(1-20) G		
Not energy efficient - higher running costs		
England & Wales		
EU Directive 2002/91/EC		

135 Hammersmith Road, West Kensington, London W14 0QL

mail@tatesestates.co.uk

tatesestates.co.uk

Tates (Agents) Ltd. Registered in England and Wales No. 02356337
Registered Office: Imperial House, 8 Keane Street, London WC2B 4AS

